

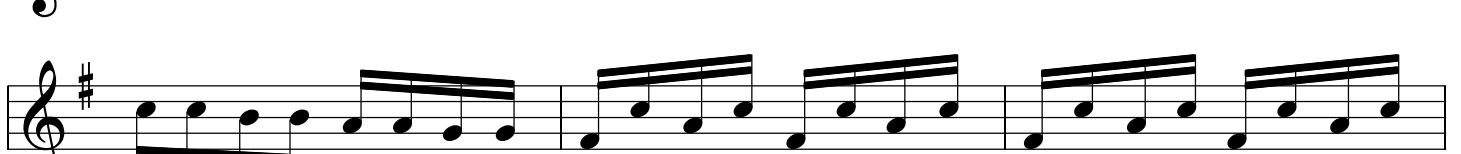
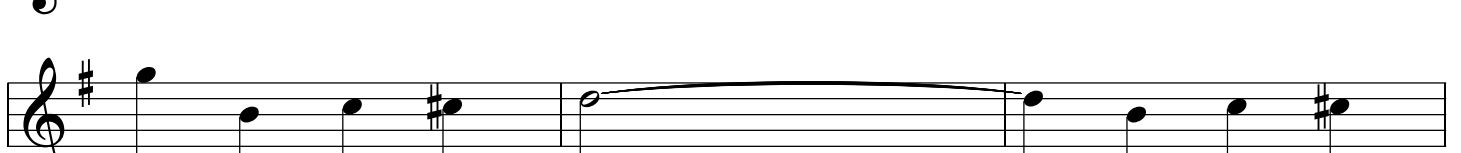
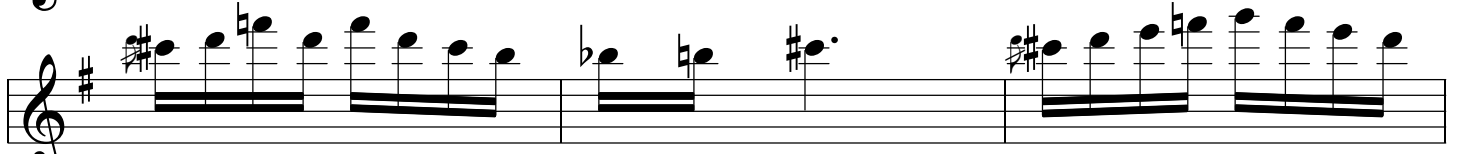
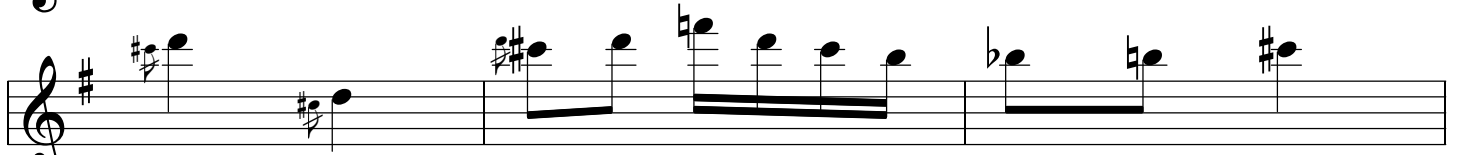
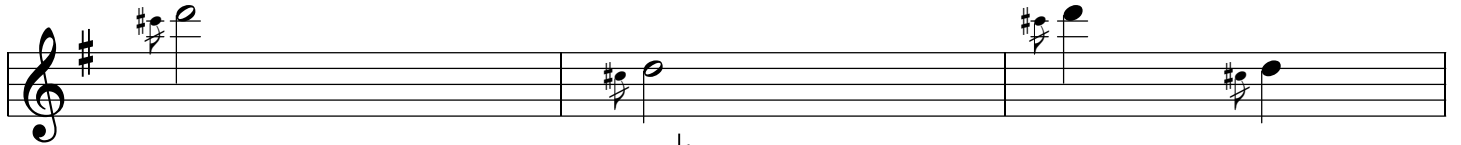
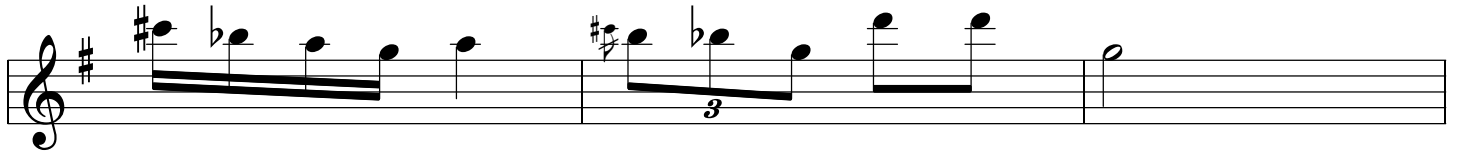
Hora Staccato

Dinicu

The musical score for 'Hora Staccato' is written in treble clef with a key signature of one sharp (F#) and a time signature of 2/4. The piece begins with a 7-measure rest. The notation consists of ten staves of music. The first staff contains a melodic line with a 7-measure rest at the beginning, followed by a half note G4, a dotted half note A4, and a half note B4. The second staff features a rhythmic accompaniment of eighth notes, starting with a dotted quarter note G4. The third staff continues the eighth-note accompaniment. The fourth staff shows a melodic line with quarter notes G4, A4, B4, and C5. The fifth staff continues the eighth-note accompaniment. The sixth staff features a melodic line with quarter notes G4, A4, B4, and C5. The seventh staff continues the eighth-note accompaniment. The eighth staff shows a melodic line with a dotted quarter note G4, a dotted half note A4, and a half note B4. The ninth staff continues the eighth-note accompaniment. The tenth staff features a melodic line with quarter notes G4, A4, B4, and C5.

This page of musical notation is for a piece in G major, indicated by the key signature of one sharp (F#). The music is written on 13 staves, each beginning with a treble clef. The notation includes a variety of rhythmic values such as eighth, sixteenth, and dotted notes, as well as rests. There are several instances of triplets, marked with a '3' below the notes. The piece features various articulation marks, including slurs and accents. The music concludes with a final cadence on the 13th staff.

This page of musical notation consists of ten staves of music in G major. The first staff features a long melodic line with a slur and a tie. The second and third staves contain rhythmic patterns with slurs. The fourth staff includes a triplet of eighth notes. The fifth and sixth staves continue with rhythmic patterns, with the fifth staff also featuring a triplet. The seventh and eighth staves show more complex rhythmic figures. The ninth staff has a melodic line with a slur and a tie. The tenth staff concludes with a rhythmic pattern. The key signature is one sharp (F#), and the time signature is not explicitly shown but appears to be common time.



The image displays three staves of musical notation in treble clef, with a key signature of one sharp (F#). The first staff contains four measures of music. The second staff contains five measures of music. The third staff contains four measures of music, ending with a double bar line.